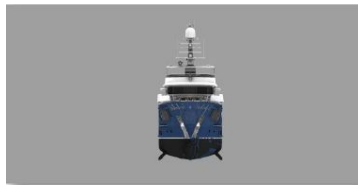


36.8 m 2024 RMK Marine 120

Call Tax: Not Paid

Istanbul, Turkey



Boat Details

Make:	RMK Marine	Class:	Mega Yacht	Heads:	4
Model:	120	Hull Material:	Steel	Fuel Type:	Diesel
Year:	2024	Beam:	8 m 60 cm	Max Speed:	13.5 kn
Length:	36 m 86 cm	Boat Location:	Istanbul, Turkey	Max Draft:	2 m 84 cm
Price:	Call	Cabins:	4		
Condition:	New	Berths:	5		



Giacomo Sorlino | Banchemo Costa Yachts

Via Pammatone 2, Genova, Italy

Tel: **+39 347 6292144**

yachts@bancosta.com

Description

//banchero costa yachts new listing//

The RMK Marine 120, available from May 2024, epitomizes quality and attention to detail in the luxury yacht industry. Crafted with premium materials and meticulous attention to detail, this yacht offers an unparalleled experience in the world of yachting.

The interior of the vessel has been designed according to the best practices in luxury yacht design, with direct collaboration between the interior designer and RMK Marine shipyard. The material selection has been executed with extreme care, ensuring the use of high-quality materials in every detail. The finishes are semi-gloss, with accents on wall panels and the use of natural and fresh-colored fabrics.

The contemporary styling of the interior is reflected in the use of standard veneers and semi-gloss finishes, while tabletops feature marquetry of standard veneers. Marble floors and countertops have been implemented in the bathrooms, offering a touch of elegance and sophistication.

Thanks to direct contact with the RMK Marine shipyard, we are able to provide all detailed information about the RMK Marine 120, ensuring potential buyers have a comprehensive understanding of the features and performance of this extraordinary vessel.

PLEASE CONTACT OUR OFFICE FOR ANY FURTHER INFORMATION

Information & Features

2024 Caterpillar C32 (Engine 1)

Type: **Inboard** Propeller Type: **5 Blade**
Fuel Type: **Diesel**
Power: **709 kW**

2024 Caterpillar C32 (Engine 2)

Type: **Inboard** Propeller Type: **5 Blade**
Fuel Type: **Diesel**
Power: **709 kW**

Dimensions

LOA: **36 m 86 cm**
Beam: **8 m 60 cm**
Max Draft: **2 m 84 cm**

Weights

Displacement: **420,000 kg**

Speed

Cruising Speed: **10 kn**
Max Speed: **13.5 kn**
Range: **3600 nmi**

Tanks

Fuel: **41,100 l**
Fresh Water: **15,320 l**
Holding: **11,000 l**

Accommodations

Double Berths:	3	Heads:	4
Twin Berths:	2		
Cabins:	4		

Other

Warranty:	2 Years
Designer:	Vripack
Builder:	RMK marine

Electrical Equipment

- Shore Power Inlet: 1 x Atlas 75kVA,
- Generator: 2 x CAT C4.4 69 ekW

Electronics

- Depthsounder: Furuno FE-800 50kHz & 200kHz Transducers
- Radar: Radar 1 : Furuno 25kW X-Band 8ft Array Radar
2 : Furuno 30kW S-Band 10ft Array
- Wind Speed and Direction: Airmar WX220
- Computer
- TV Set
- Navigation Center
- Plotter: TRANSAS NS4000 ECDIS & TIME ZERO PRO
- DVD Player
- Radio
- Compass: Sperry Marine Jupiter 180mm Overhead
- GPS: SAAB R5 Supreme DGPS
- Cockpit Speakers
- VHF: 2 x SAILOR 7222 VHF DSC Class A

Inside Equipment

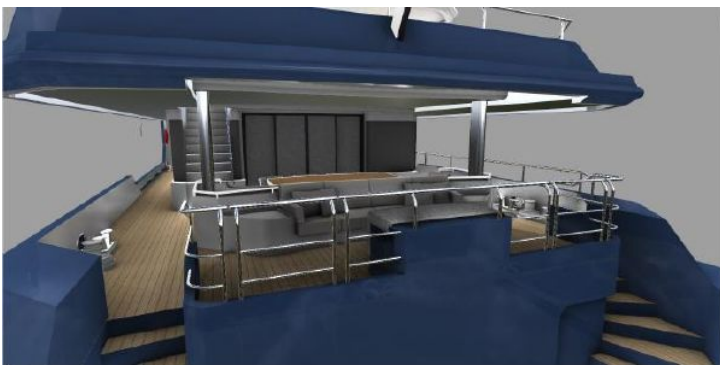
- Seakeeper: Quantum Zero Speed 2 x 3,5 m2 fins
- Dishwasher
- Bow Thruster: OMS Ø498mm 75 kW hydraulic driven
- Washing Machine
- Oven
- Microwave Oven
- Air Conditioning
- Electric Head
- Heating
- Hot Water
- Refrigerator
- Fresh Water Maker
- Deep Freezer
- Battery Charger: Victron

Outside Equipment/Extras

- Teak Cockpit
- Hydraulic Gangway: Opacmare 4710mm
- Cockpit Cushions
- Cockpit Table
- Swimming Ladder: Opacmare 5 Steps 700kg

Disclaimer

The Company offers the details of this vessel in good faith but cannot guarantee or warrant the accuracy of this information nor warrant the condition of the vessel. A buyer should instruct his agents, or his surveyors, to investigate such details as the buyer desires validated. This vessel is offered subject to prior sale, price change, or withdrawal without notice.



SALOON



LOBBY



SKYLounge



WHEELHOUSE



MASTER CABIN



MASTER CABIN BATHROOM



DOUBLE GUEST CABIN



TWIN GUEST CABIN



LOBBY STAIRS