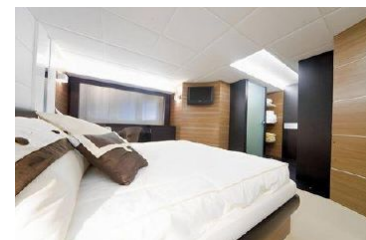


24.6 m 2007 Astondoa 76 GLX

€1,400,000 Tax: Paid, Spain

Ibiza, Spain



## Boat Details

Make:	<b>Astondoa</b>	Class:	<b>Cruiser</b>	Fuel Type:	<b>Diesel</b>
Model:	<b>76 GLX</b>	Hull Material:	<b>Fiberglass</b>	Max Draft:	<b>1 m 80 cm</b>
Year:	<b>2007</b>	Beam:	<b>6 m 20 cm</b>		
Length:	<b>24 m 60 cm</b>	Boat Location:	<b>Ibiza, Spain</b>		
Price:	<b>€1,400,000</b>	Cabins:	<b>4</b>		
Condition:	<b>Used</b>	Heads:	<b>4</b>		



**Giacomo Sorlino | Banchemo Costa Yachts**

Via Pammatone 2, Genova, Italy

Tel: +39 347 6292144

yachts@bancosta.com

## Description

//banchero costa yachts new listing//

We are pleased to announce the market launch of this fantastic 2007 Astondoa 76 GLX.

The boat is located in Ibiza and is in turn key condition.

Always kept in a maniacal manner, it has received several ordinary and extraordinary maintenance operations dictated by the attention of a scrupulous and careful owner.

The boat has all the comforts and features to accommodate 8 guests in four cabins, each with its own en-suite bathroom.

The large saloon allows you to fully enjoy the interior of the boat and the fly bridge gives this Astondoa an ideal configuration for enjoying time on board.

One of the two engines was recently replaced and has less than 100 hours on the clock!

More photos and videos available against interest

FOR FURTHER INFORMATION PLEASE FEEL FREE TO CONTACT OUR OFFICE

## Information & Features

### 2023 MAN 12V 1550 CRM (Engine 1)

Type:	<b>Inboard</b>	Power:	<b>1550 hp</b>
Fuel Type:	<b>Diesel</b>		
Hours:	<b>100</b>		

### 2007 MAN 12V 1550 CRM (Engine 2)

Type:	<b>Inboard</b>	Power:	<b>1550 hp</b>
Fuel Type:	<b>Diesel</b>		
Hours:	<b>1200</b>		

### Dimensions

LOA:	<b>24 m 60 cm</b>
Beam:	<b>6 m 20 cm</b>
Max Draft:	<b>1 m 80 cm</b>

### Tanks

Fuel:	<b>5,000 l</b>
Fresh Water:	<b>1,200 l</b>

### Accommodations

Cabins:	<b>4</b>
Heads:	<b>4</b>

### Other

Warranty:	<b>None</b>	Builder:	<b>Astondoa</b>
Hull Shape:	<b>Deep Vee</b>		
Flag Of Registry:	<b>Spain</b>		

### Electrical Equipment

- Generator: 2X

## Electronics

- Radar
- Computer
- TV Set
- Plotter
- Autopilot
- Radio
- GPS
- Cockpit Speakers
- VHF

## Inside Equipment

- Dishwasher
- Bow Thruster
- Washing Machine
- Oven
- Microwave Oven
- Air Conditioning
- Electric Head
- Refrigerator
- Fresh Water Maker
- Deep Freezer
- Sea Water Pump

## Outside Equipment/Extras

- Teak Cockpit
- Cockpit Shower
- Teak Sidedecks
- Hydraulic Gangway
- Cockpit Cushions
- Cockpit Table
- Swimming Ladder

## Manufacturer Provided Description

At the head of its category, the Astondoa 76 GLX enters a new era with a futuristic concept in sailing, incorporating the latest technological advances.

## Disclaimer

The Company offers the details of this vessel in good faith but cannot guarantee or warrant the accuracy of this information nor warrant the condition of the vessel. A buyer should instruct his agents, or his surveyors, to investigate such details as the buyer desires validated. This vessel is offered subject to prior sale, price change, or withdrawal without notice.

